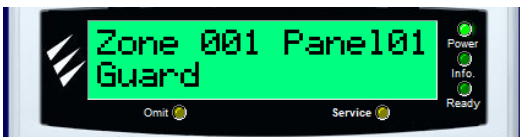




Press **1234** on the control panel. The below message will be displayed.



Press Yes ✓



Press any free zone number (eg: **089**) to learn your DT PIR



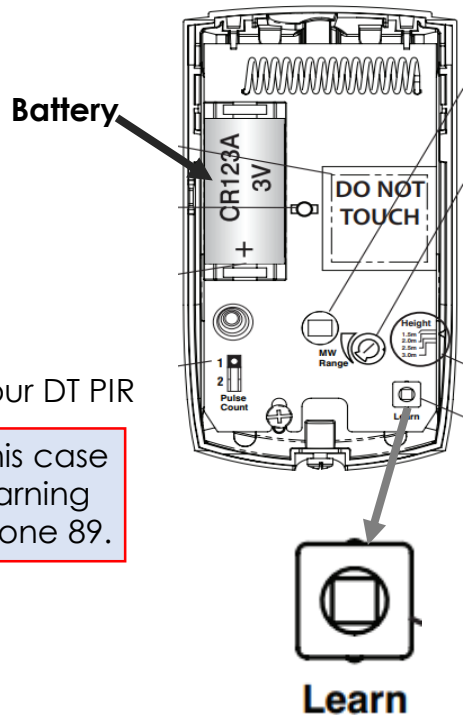
Press reset button ↻



When it starts learning you need press the learn button and then insert the battery into the DT PIR



Press Yes ✓ till you reach zone type



**Note:** In this case we're learning sensor in zone 89.



**Caution:** Do not change the zone type & wiring type.

Press **Yes** ✓ 7times to reach zone mode(wiring) make zone wiring as "always awake"

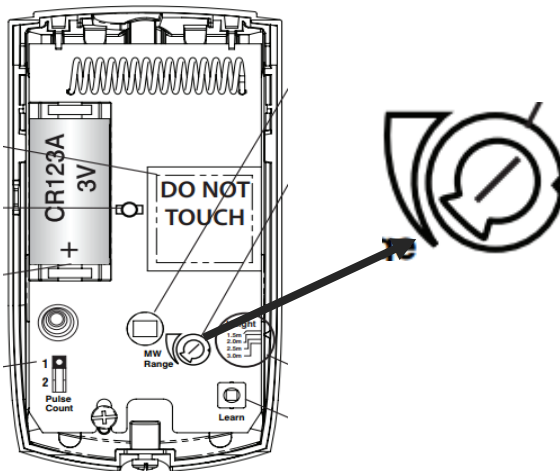


Press **Menu** (☰) **two times** on the control panel and then press **Yes** to logoff from your control panel

### Frequently Asked Questions:

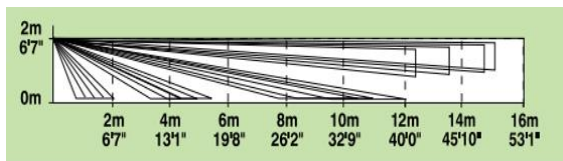
1. How to adjust the microwave range in the device?

**Ans:** The below image will give you an idea for finding the learn button.

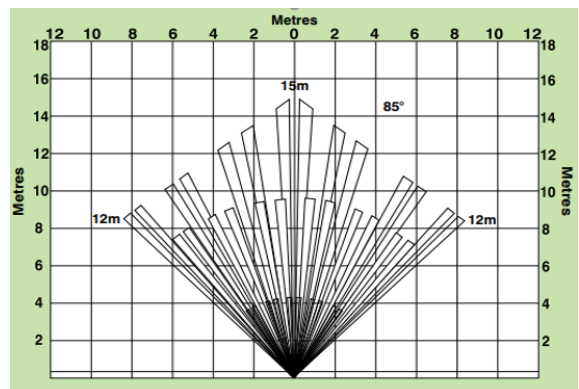


2. What would be the maximum height should the PIR has to be placed & How does it cover the distance?

**Ans:** The maximum height is 2mts & below image will give you an idea for height & distance it covers.



**Front View**



**Top View**