

Emergency signalling wherever you need it



Miniature wireless panic button with *Ricochet*® mesh technology

Protect the things you care about. The Micro PA-W is Texecom's smallest ever panic button, providing virtually unnoticeable protection wherever needed. The discreet, miniature design can be mounted in a wide variety of applications, and the constantly-supervised *Ricochet* mesh technology guarantees robust, dependable, wireless communications.

Ideal applications include:

Commercial - Bank staff, cashier desks, hotel lobbies, retail workers.

Residential - Elderly assistance, medical emergencies, forced entry.

Outstanding features include:

- Miniature, discreet design
- Constantly-supervised wireless signalling with *Ricochet* mesh technology
- Simple single button operation with automatic keyless reset
- 3-Year typical battery life
- Compatible with *Ricochet* enabled Texecom Premier Elite and Premier control panels



Texecom products are designed and manufactured in the UK

www.texe.com
Sales: 02261 011 211

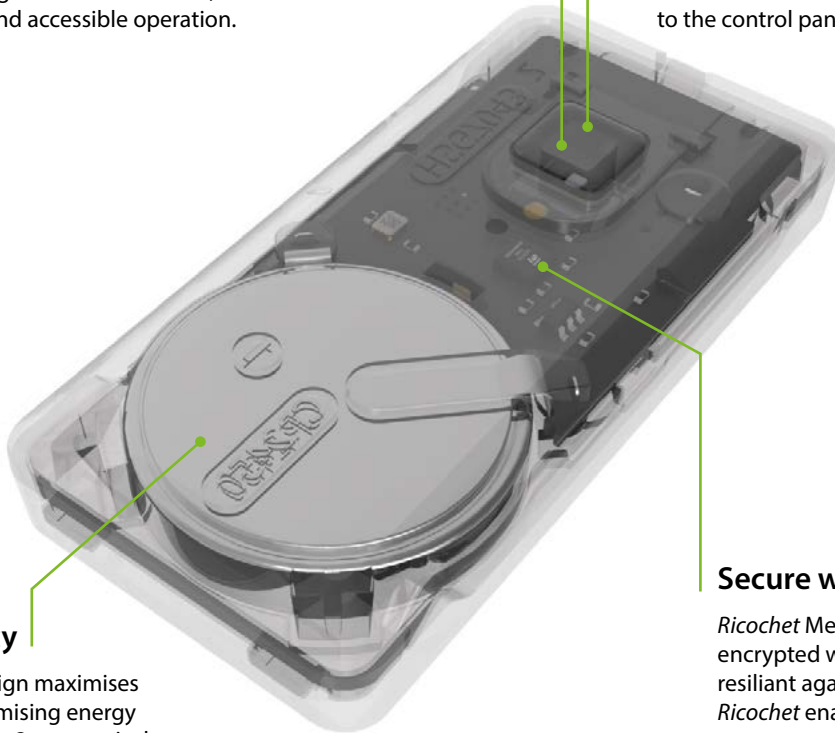
Small in size. Packed with features.

Simple single button operation

In an emergency, simple operation is crucial. The Micro PA-W has a single button that is pressed twice to activate. No clever combinations. No intricate details for when you are reaching to use under a desk, out of sight. Just simple, easy, and accessible operation.

Install with ease

Simple, fast and easy to setup, the Micro PA-W is installed with a single button. With intuitive LED indications taking you step-by-step through the installation and commissioning process, trips back to the control panel are no longer required.



Effortless efficiency

Intelligent electronic design maximises performance whilst minimising energy consumption. Achieving a 3-year typical battery life from a single coin-cell battery (CR2450) the PA-W provides longer service intervals and minimal disruption.

Secure wireless

Ricochet Mesh Technology provides secure, encrypted wireless communications that are resilient against blocked transmission paths. *Ricochet* enabled wireless devices receive and repeat messages from other devices. The size, scalability and range of the entire system are extended, as wireless signalling is no longer limited by point-to-point communications.

Standards & Specifications

Alarm System	EN50131-2-6, EN50131-5-3, EN50131-1, PD6662, Grade 2 Class II
Product Type & Frequency Band	GHE1000 : 866.0 – 866.6MHz
Receiver	Category 1, Class 2
Receiver LBT	Listen Before Talk
Transmitter Duty Cycle	866MHz<1%
Max RF power	10mW
Low Voltage Signal	2.80V
Operating Voltage	3V
Maximum Current	12mA
Quiescent Current	10uA
Relative Humidity	0 – 95% non-condensing

Dimensions & Weight

